

# What Makes a Good Bee Plant?

Your name here

## Color:

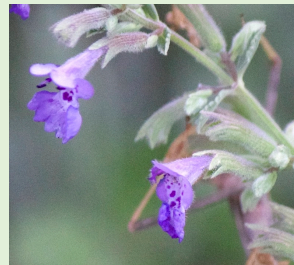
- Bees see in the ultraviolet spectrum
- Bees see purple, yellow, and white the best

Nectar fluorescing under ultraviolet light, as the bees see it



## Patterns:

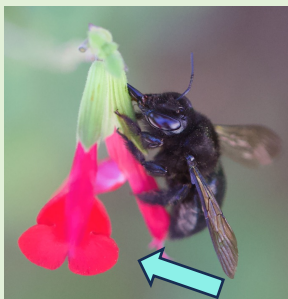
Nectar guides direct bees to nectar sources within the flower



Good bee plants have patterns of spots and lines that direct bees to nectar within the flower

## Structure:

- Flat, open flowers
- Flowers of various sizes for small to large bees
- Flowers with a landing pad
- Short, not long, tubular flowers that bees can enter



Fused petals create a landing pad that bees can grasp



Flat, open flowers have easy pollen access



Tubular flower is large enough for bees to enter